



創唯實業有限公司

PLASTRONIC TECHNOLOGY CO., LTD.

TEL : 886-2-2276-3375

www.loadcell.com.tw

FAX : 886-2-2276-3557

www.plastronic.com.tw

E-mail: plastronictech@gmail.com

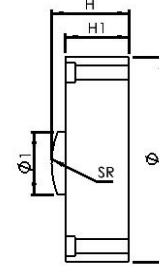
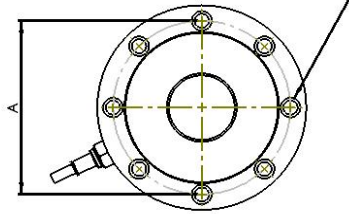
新北市24252新莊區化成路398巷13號

No.13, Lane 398, Huacheng Rd., Xinzhuang Dist., New Taipei City 24252, Taiwan

## DC6



200K有16個孔(16 holes for 200K model)  
5-10K & 100K有8個孔(8 holes for 5-10K & 100K model)  
25-50K有4個孔(4 holes for 25-50K model)



Capacity		Size					
Klb	t	A	Ø	Ø1	H	H1	SR
0.2-15	0.1-7.5	88.9	104.7	32	38.8	31.8	80.0
25-50	10-25	101.6	120.7	38.9	53.8	41.1	91.3
100	50	116.8	140	50.4	57.2	50.8	105.6
150-200	60-100	162	200	76	83	70	200.0

應用：料斗/筒槽/容器秤、汽車/軌道衡、材料試驗機

Applications : Hopper/Silo/Tank scale, Truck/Rail scale, Universal material tester

### 技術規格 Specification

額定荷重	Rated Capacities	0.5 ~ 100t
額定輸出	Rated Output	2.0 mV/V±0.5%
精度等級	Accuracy class	
非線性	Non-linearity	0.03%F.S
遲滯	Hysteresis	0.03%F.S
重複性	Repeatability	0.02%F.S
蠕變/回零(20分鐘)	20mins Creep/DR	0.03%F.S
輸出溫度影響	Temperature Effect On Output	0.02 %F.S/10℃
零點溫度影響	Temperature Effect On Zero	0.03 %F.S/10℃
零點平衡	Zero Balance	±0.0200 mV/V
輸入阻抗	Input Impedance	385±15 Ω
輸出阻抗	Output Impedance	350±3 Ω
絕緣阻抗	Insulation Impedance	≥5000 MΩ
安全過載率	Safe Overload	150 %F.S
極限過載率	Ultimate Overload	200 %F.S
工作溫度範圍	Operating Temperature Range	-20~60 ℃
建議工作電壓	Recommended Excitation	5~12 VDC
最大工作電壓	Maximum Excitation	15 VDC
材質	Construction	鋼合金 Steel Alloy/不鏽鋼 Stainless Steel
防水等級	Protection Class	IP67 / IP68
電纜線	Cable	φ5.4×6 m
建議台面尺寸	Recommended Platform Size	

接線方式 Mode of Connection

紅：電源+，黑：電源-，綠：信號+，白：信號-  
Red (EXC+) ,Black (EXC-) ,Green (SIG+) ,White (SIG-)