



創唯實業有限公司

PLASTRONIC TECHNOLOGY CO., LTD.

TEL: 886-2-2276-3375

www.loadcell.com.tw

E-mail: plastronictech@gmail.com

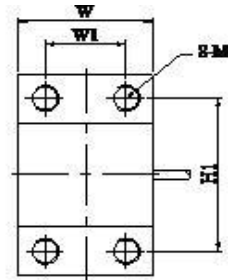
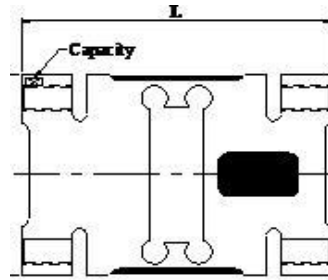
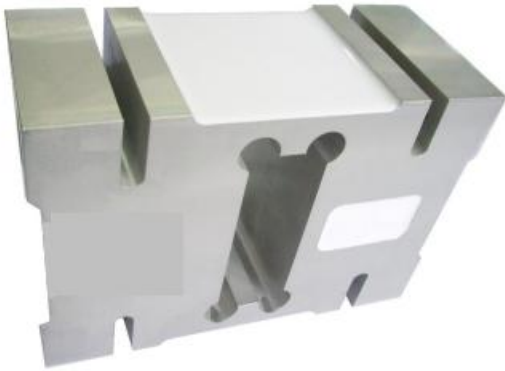
FAX: 886-2-2276-3557

www.plastronic.com.tw

新北市24252新莊區化成路398巷13號

No.13, Lane 398, Huacheng Rd., Xinzhuang Dist., New Taipei City 24252, Taiwan

PF4



主視 (Front View)

右視 (Right View)

TYPE	Capacity(kg)	L	W	W1	H	H1	M	推薦台面尺寸 Recommended Platform
	50-200	156	44	24	75	50	M12x1.75	600x600mm
	250-500	146	60	36	95	70	M12x1.75	600x800mm
	750-2000	176	76	46	125	95	M16x2	1200x1200mm

應用：平台秤

Applications : Platform Scale

技術規格 Specification

額定荷重 Rated Capacities 250, 500, 750, 1000, 2000 (kg)

額定輸出 Rated Output 2.0 mV/V±5%

精度等級 Accuracy class

非線性 Non-linearity 0.03 %F.S

遲滯 Hysteresis 0.03 %F.S

重複性 Repeatability 0.02 %F.S

蠕變/回零(20分鐘) 20mins Creep/DR 0.03 %F.S

輸出溫度影響 Temperature Effect On Output 0.02 %F.S/ 10°C

零點溫度影響 Temperature Effect On Zero 0.03 %F.S/ 10°C

零點平衡 Zero Balance ±0.0200 mV/V

輸入阻抗 Input Impedance 410±15 Ω

輸出阻抗 Output Impedance 350±5 Ω

絕緣阻抗 Insulation Impedance ≥5000 MΩ

安全過載率 Safe Overload 150 %F.S

極限過載率 Ultimate Overload 200 %F.S

工作溫度範圍 Operating Temperature Range -20~60 °C

建議工作電壓 Recommended Excitation 5~12 VDC

最大工作電壓 Maximum Excitation 15 VDC

材質 Construction 鋁合金 Aluminum Alloy

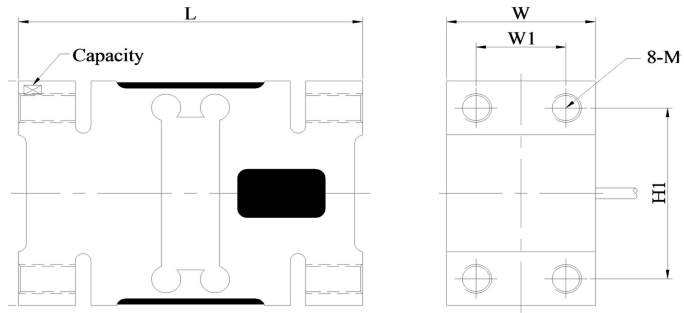
防水等級 Protection Class IP66

電纜線 Cable φ6×3 m

建議台面尺寸 Recommended Platform Size 1200×1200 mm

接線方式 Mode of Connection

紅：電源+，黑：電源-，綠：信號+，白：信號-
Red (EXC+) ,Black (EXC-) ,Green (SIG+) ,White (SIG-)



主视 (Front View)

右视 (Right View)

TYPE	Capacity(kg)	L	W	W1	H	H1	M	推荐台面尺寸 Recommended Platform Size
	50~200	156	44	24	75	50	M12× 1.75	600× 600mm
	250~500	146	60	36	95	70	M12× 1.75	600× 800mm
	750~2000	176	76	46	125	95	M16× 2	1200× 1200mm

