



創唯實業有限公司

PLASTRONIC TECHNOLOGY CO.,

TEL: 886-2-2276-3375

www.loadcell.com.tw

E-mail: plastronictech@gmail.com

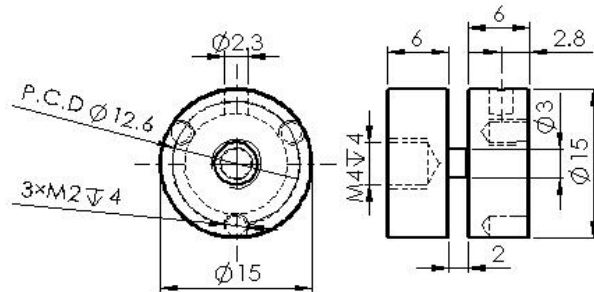
FAX: 886-2-2276-3557

www.plastronic.com.tw

新北市24252新莊區化成路398巷13號

No.13, Lane 398, Huacheng Rd., Xinzhuang Dist., New Taipei City 24252, Taiwan

## DC13



應用：拉壓力量測

Applications: Tension/depressing force measurement

### 技術規格 Specification

|             |                              |                      |
|-------------|------------------------------|----------------------|
| 額定荷重        | Rated Capacities             | 3, 5, 10, 20, 50(kg) |
| 額定輸出        | Rated Output                 | 1~2mV/V±0.2          |
| 精度等級        | Accuracy class               | 0.3%F.S              |
| 非線性         | Non-linearity                | 0.3%F.S              |
| 遲滯          | Hysteresis                   | 0.3%F.S              |
| 重複性         | Repeatability                | 0.1%F.S              |
| 蠕變/回零(20分鐘) | 20mins Creep/DR              | 0.3%F.S              |
| 輸出溫度影響      | Temperature Effect On Output | 0.3 %F.S/10°C        |
| 零點溫度影響      | Temperature Effect On Zero   | 0.3 %F.S/10°C        |
| 零點平衡        | Zero Balance                 | ± 0.100 mV/V         |
| 輸入阻抗        | Input Impedance              | 1000±15 Ω            |
| 輸出阻抗        | Output Impedance             | 1000±15 Ω            |
| 絕緣阻抗        | Insulation Impedance         | ≥2000 MΩ             |
| 安全過載率       | Safe Overload                | 120 %F.S             |
| 極限過載率       | Ultimate Overload            | 150 %F.S             |
| 工作溫度範圍      | Operating Temperature Range  | -20~60 °C            |
| 建議工作電壓      | Recommended Excitation       | 5 VDC                |
| 最大工作電壓      | Maximum Excitation           | 10 VDC               |
| 材質          | Construction                 | 鋁合金 Aluminum Alloy   |
| 防水等級        | Protection Class             | IP65                 |
| 電纜線         | Cable                        | φ2×2 m               |
| 建議台面尺寸      | Recommended Platform Size    |                      |

接線方式 Mode of Connection

紅：電源+，藍：電源-，黃：信號+，白：信號-  
Red (EXC+) ,Blue (EXC-) ,Yellow (SIG+) ,White (SIG-)